

**TNW-Q19**

# AI Selfie Stick Gimbal Stabilizer

APP User Manual



APP Download QR Code



Download on the  
App Store

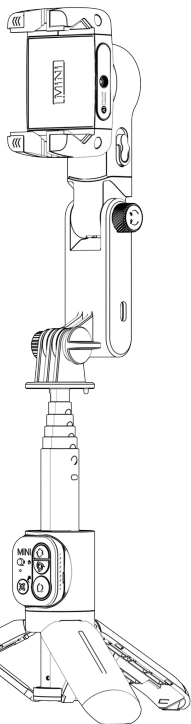
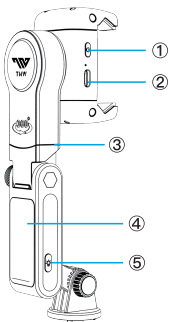


GET IT ON  
Google Play



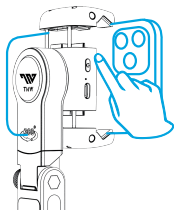
# User Manual

# Operation interface



- ① Gimbal power button
- ② Gimbal charging port
- ③ Manual rotation
- ④ Fill light
- ⑤ Light power button
  
- ⑦ Gimbal lock
- ⑧ Fill light charging port
- ⑨ Knob
- ⑩ Aluminum alloy rod
- ⑪ Wireless remote

# How to connect



## First time connection:

1. Mount the phone in the center of the phone clip
2. Long press the gimbal power button to turn on the gimbal, the green light flashes to enter the pairing state, search for **“TNW AI-XXXXXX”** in the phone to match, after successful pairing, the green light is always on.

---

## Low power mode:

When the gimbal is powered on, triple-click the gimbal power button to enter/exit the low power mode.

In this mode, without operating the gimbal for 20 mins, the gimbal will automatically shut down.

---

## Auto Pairing Connection:

Gimbal can automatically connect to paired phone when it is switched on.

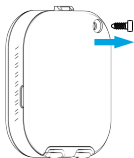
---

## Activating the remote control:

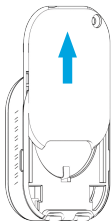
With the gimbal powered on, turn on the remote control and you are ready to use.

No operation of the remote control for 5 mins, the remote control enters into a dormant state, click any button on the remote control to wake it up.

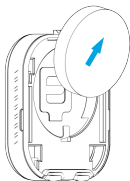
## Replace a battery



① Take out the screw

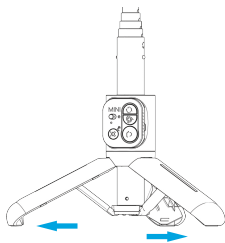
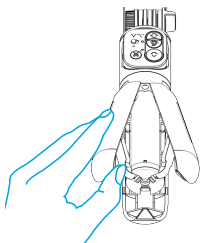


② Slide the cover upward



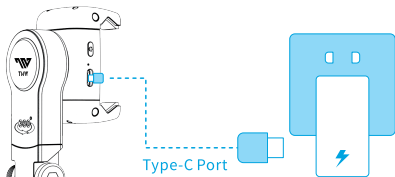
③ Replace a battery

## Open tripod



Open outward from the bottom of the handle into a tripod.

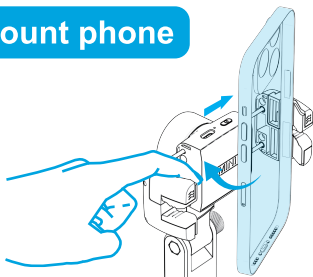
## Gimbal charging



When the gimbal power is too low, the indicator light turns from green to red, at this time to use the Type-C charging cable to charge.

When charging, the red light is always on, and when fully charged, the red light is off.

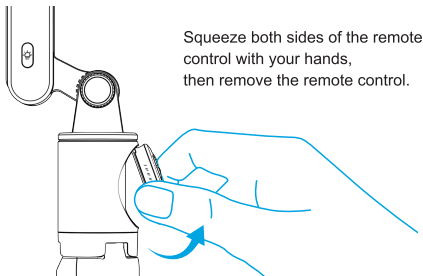
## Mount phone



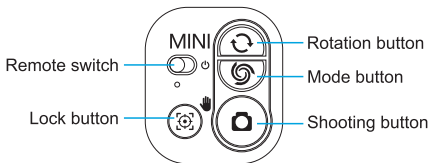
Push one side of the clip with the phone while pulling the other side of the clip with your hand and then press the phone against the gimbal and secure it.

\* The phone camera and the gimbal power button must be on the same side.

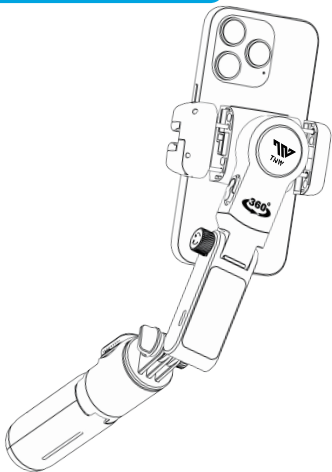
## Remove the remote



## About the remote



# Stabilizer mode



**Click :** Switch between horizontal / vertical

**Long Press :** Right spinshot mode

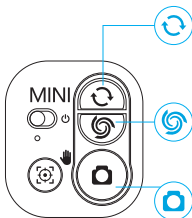
**Double-Click :** Auto spinshot mode

**Click :** POV mode

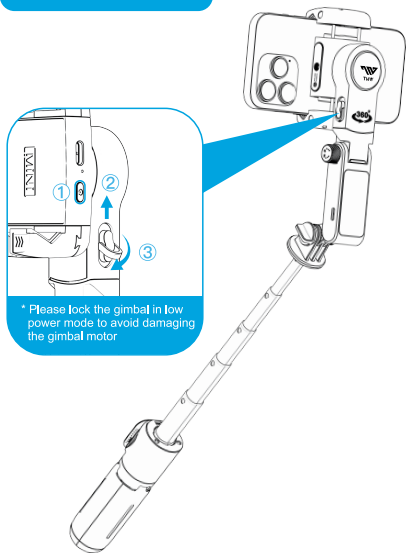
**Long Press :** Left spinshot mode

**Double-Click :** Slow spin mode


**Click :** Photo/video recording



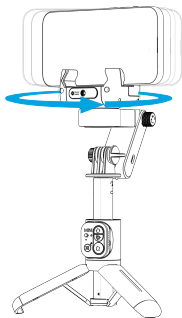
# Selfie mode



\* Please lock the gimbal in low power mode to avoid damaging the gimbal motor

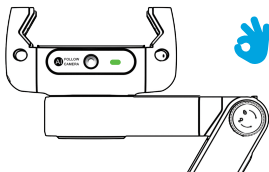
1. Triple-click the gimbal power button to enter/exit low power mode.
2. Rotate the locking ring outward and push it upward to lock the gimbal in place.
3. Flatten the locking ring down to lock and switch to selfie stick mode.
4. Click the shooting button  to take a picture/video.

# AI tracking mode



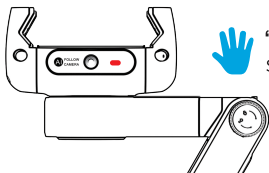
- 
- Click :** Rotate 30° left  
**Long Press :** Keep rotating left  
**Double-Click :** APP tracking
  - Click :** Rotate 30° right  
**Long Press :** Keep rotating right  
**Double-Click :** APP tracking off
  - Click :** Photo/video recording
  - Click :** Gimbal lens tracking on/off  
**Double-Click :** Gesture function on/off
  - Click :** Gimbal rotation stop  
**Double-Click :** Gimbal auto rotation/  
Gimbal rotation stop  
**Triple-Click :** Enter/exit low power mode

# Gesture function



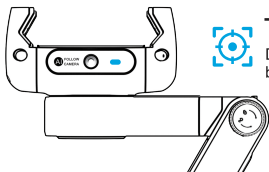
## “OK” Gesture

Start face tracking/  
protagonist mode



## “PALM” Gesture

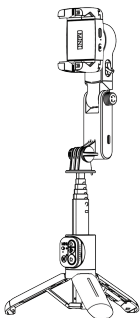
Start face tracking



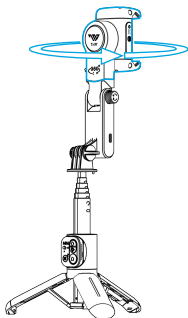
## Turn Off Gesture

Double-click the lock  
button of the remote

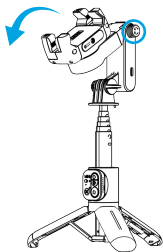
# Switch to tracking mode



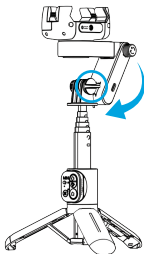
① Open gimbal



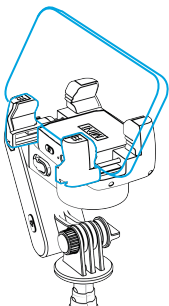
② Rotate back 180°



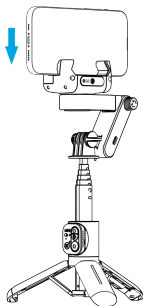
③ Use the knob to adjust and then lock it



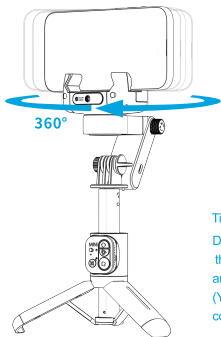
④ Use the knob to adjust and then lock it



- ⑤ Use the phone to push the clip and then clamp





- ⑥ Adjust the phone to the center position and make sure it is clamped down

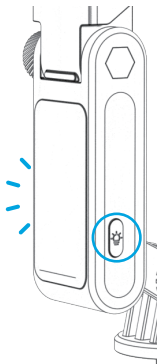


- ⑦ Place the tripod on a level surface, turn on the gimbal, activate the remote control and start using it!

Tip:

Double-click the gimbal power button, the gimbal will automatically rotate 360°, and click/double click again to stop the rotation. (You can also click  /  on the remote control to stop the rotation)

# Fill light



## Light power button

Long press: Turn on/off light

Click: 1. Switch light mode  
and brightness levels

2. Turn off the flash mode

Double press: Turn on flash mode

## Light mode

White light: Soft, Medium, Bright;

Warm light: Soft, Medium, Bright;

Natural light: Soft, Medium, Bright.

\*At any time, long press the light power button,  
turn off the light and remember

Number of white lights: 7

Number of warm lights: 7

White light

color temperature: 6500K

Lumen: 40 lm

Power: 0.6W

Warm light

color temperature: 3000K

Lumen: 40 lm

Power: 0.6W

Natural light

color temperature: 4283K

Lumen: 60 lm

Power: 1.2W

Battery capacity: 400mAh

Power consumption: 1.2W

Charging current/input current: 0.5A

Working current/output current: 0.3A

# Specification

- Main Material: ABS+Aluminum Alloy
- Folded Length: 157mm
- Extended Length: 650mm
- Product Size: 157x77x71mm
- Product Weight: 260g
- Remote Control Battery: CR1632(Replaceable)
- Charging Port: Type-C
- Gimbal Battery : 400mAh
- Working Voltage : 3.7V
- Mount Holder: 50-90mm(Gimbal)  
6.7-16.6mm(Tracking Mode)
- Face Recognition Distance: 0.5-5m
- Gesture Recognition Distance: 0.5-3m

(Batteries must not be exposed to sunlight, fire or similar overheating)

## REMIND

Selfie Stick compatible with Android4.4 and above& iOS 5.1and above(if you change the system's "volume button function" under your phone's camera option, be sure to change it to default, or "take a picture" to make the selfie stick work)

The clip must be held tightly when the phone is clamped.

- 1.Gimbal Stabilizer Mode: the best use in the 3 rods
- 2.Selfie Stick Mode: 6 rods are recommended

**Thank you for your support!**



RoHS

